

MONTHLY MEMBERSHIP PROGRESS REPORT

LOCATION AUSTRALIA

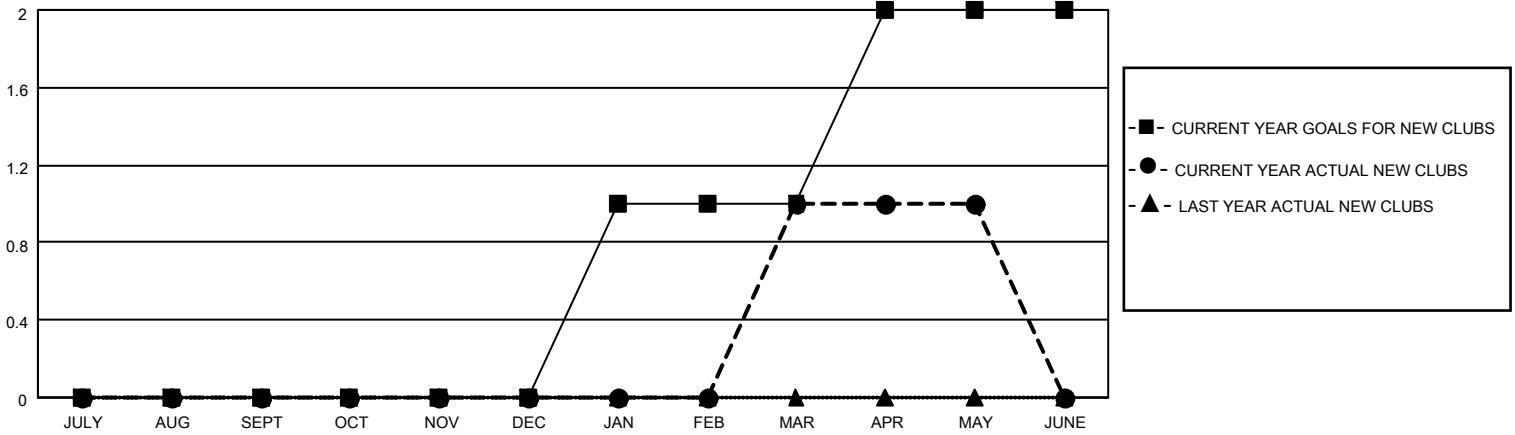
District 201Q1

Results as of: 5/31/2023

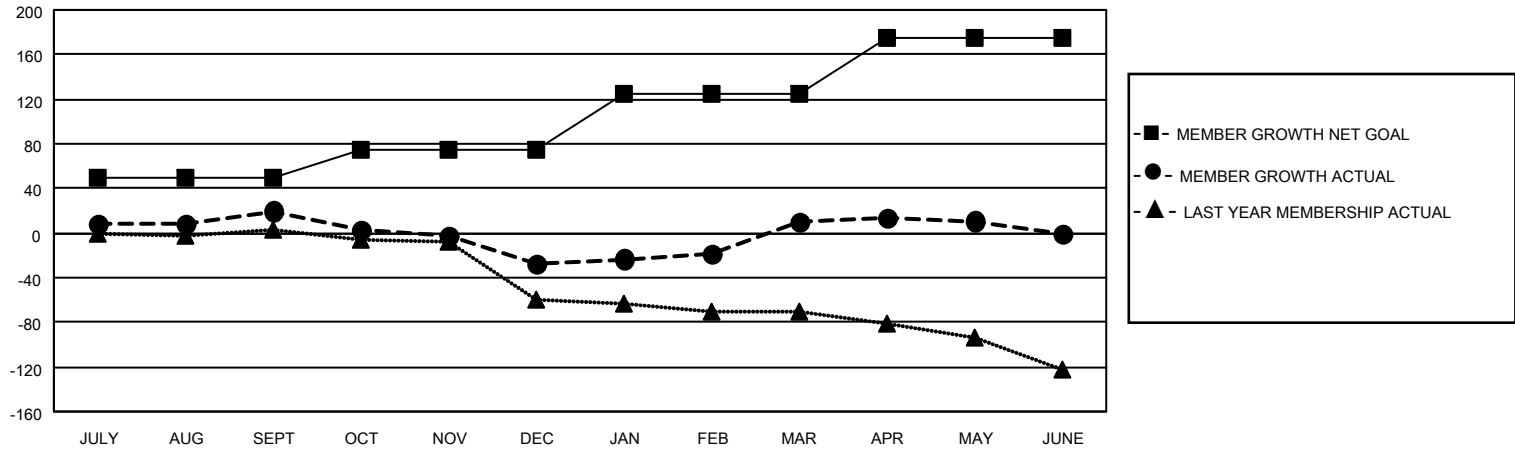
Clubs			
RESULTS FOR 2022-2023			
QUARTER	NEW CLUB GOAL	NEW CLUBS	DROPPED CLUBS
JULY/AUG/SEPT	0	0	0
OCT/NOV/DEC	0	0	2
JAN/FEB/MAR	1	1	0
APR/MAY/JUNE	1	0	0

Members			
RESULTS FOR 2022-2023			
QUARTER	MEMBER GROWTH NET GOAL	MEMBER GROWTH ACTUAL	DROPPED MEMBERS ACTUAL (including transfers)
JULY/AUG/SEPT	50	47	20
OCT/NOV/DEC	25	24	67
JAN/FEB/MAR	50	88	39
APR/MAY/JUNE	50	21	18

GOALS AND ACTUAL NEW CLUBS CUMULATIVE



GOALS AND ACTUAL MEMBERS CUMULATIVE



DROPPED CLUBS: 2

48 CLUBS OF 73 ADDED 1 OR MORE NEW MEMBERS

GENDER DISTRIBUTION

MALE	861 (59.42%)
FEMALE	587 (40.51%)
NON BINARY	1 (0.07%)
PREFER NOT TO ANSWER	0 (0.00%)

DROPPED MEMBERS

[CLICK HERE FOR CUMULATIVE MEMBERSHIP DATA](#)

DECEASED	14
CLUB CANCELLED	6
OTHER	124
TOTAL	144

TOTAL FAMILY UNIT MEMBERS 236

FAMILY MEMBERS PAYING HALF DUES 119